



# ACHIEVING AICHI TARGET 11 IN THE DEMOCRATIC REPUBLIC OF THE CONGO

BROWN BAG – ABCG  
JANUARY 29, 2015



PARAP



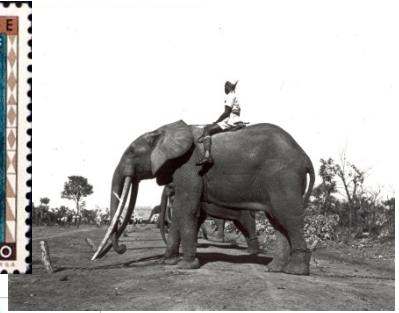
# DEMOCRATIC REPUBLIC OF THE CONGO

- A country of continental size
- An incredible natural capital
- Conflicts and political instability
- On the road towards economic emergence



# THE PROTECTED AREAS OF THE DRC

- A long history of nature conservation
- Repeated political commitment to consolidate and expand the protected area system
- A vast collection of diverse protected areas
- At a critical crossroad



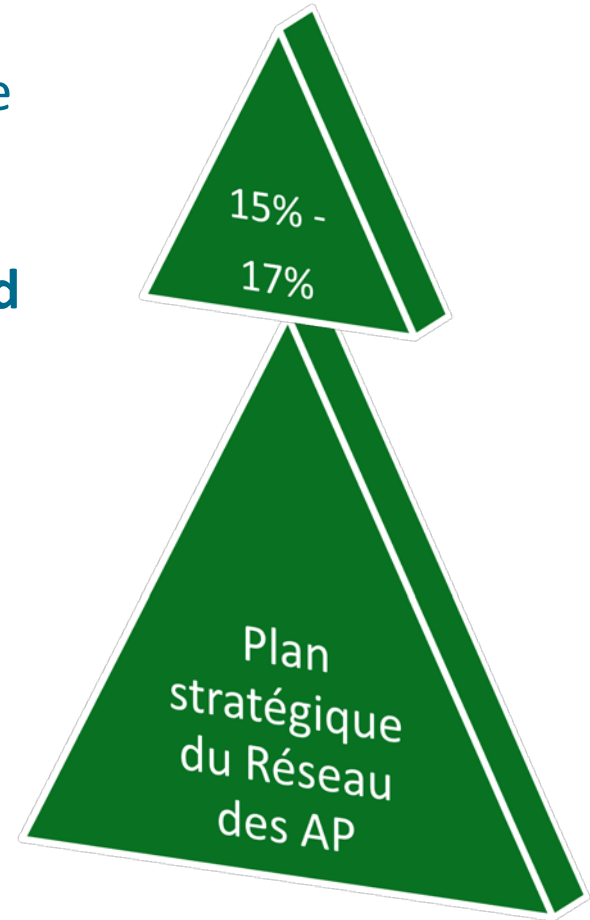
# AICHI TARGET 11

- By 2020, at least 17 per cent of terrestrial and inland water areas and 10 per cent of coastal and marine areas, especially ***areas of particular importance for biodiversity and ecosystem services***, are conserved through effectively and equitably managed, ecologically representative and well-connected systems of protected areas and other effective area-based conservation measures, and integrated into the wider landscape and seascape.

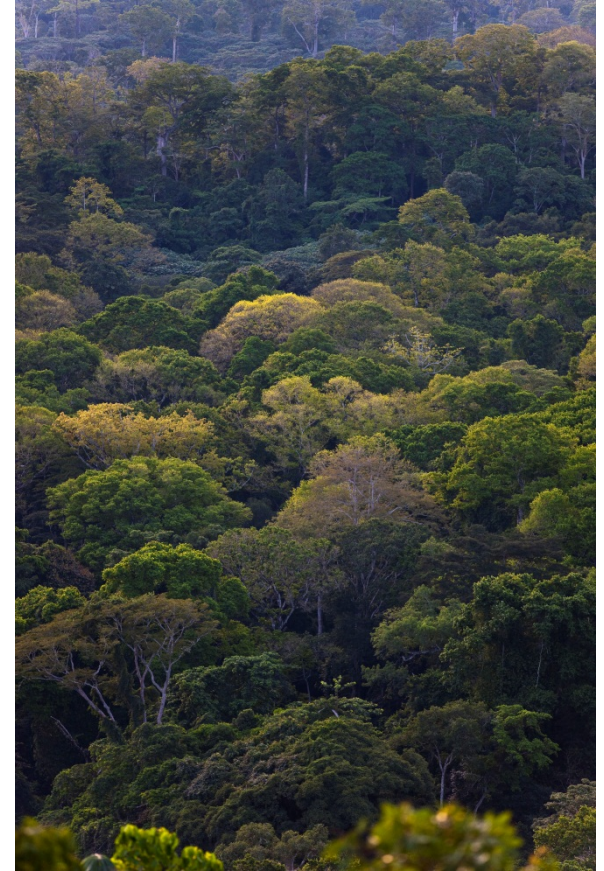
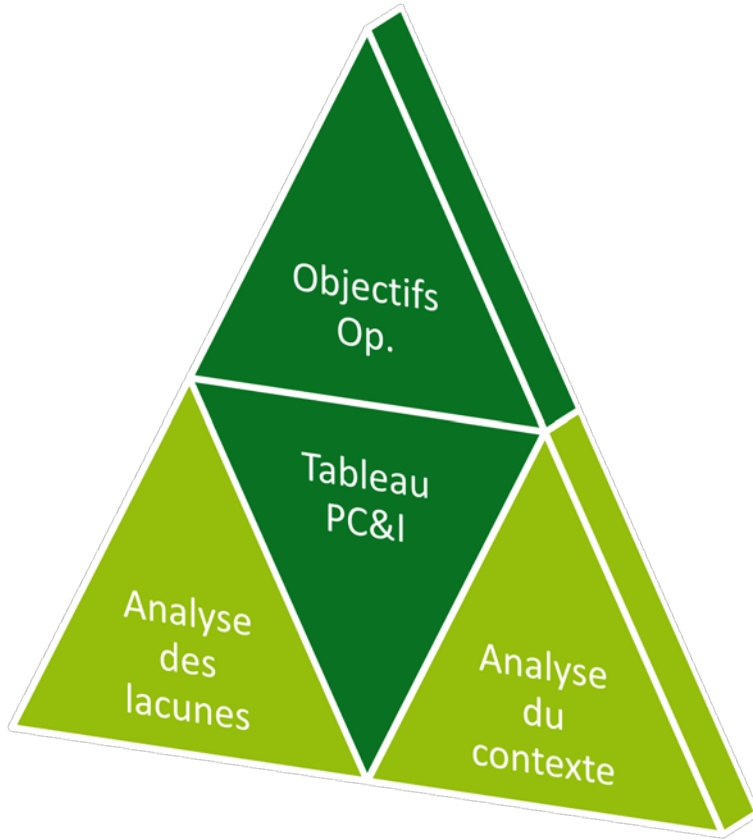


# APPROACH AND KEY PRINCIPLES

- Stay grounded in the **reality of the DRC**, while remaining focused on the **overall objective**
- Support a culture of application and **improved management**
- Capitalize on **efforts** underway
- Incorporate **best information**, maintain **best practices**
- Participate in developing a **system-based approach** to conservation in the DRC



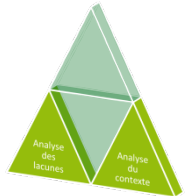
# NATIONAL PROTECTED AREA SYSTEM STRATEGIC PLAN



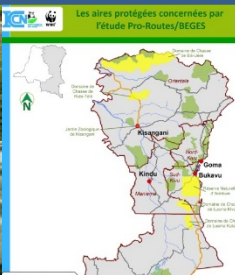
# ANALYTICAL PROCESS



- Focal biodiversity elements and environmental services
- Gap analysis – KBA
- Integration of **critical contextual elements**

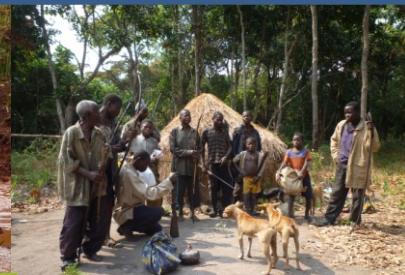


# MASSIVE EFFORT IN DATA COLLECTION AND ANALYSIS

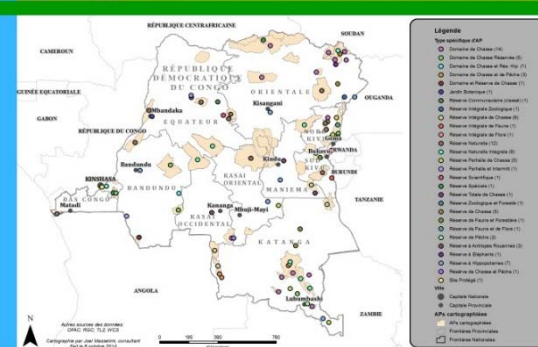


REPUBLIQUE DEMOCRATIQUE DU CONGO  
 MINISTRE DE L'ENVIRONNEMENT,  
 CONSERVATION DE LA NATURE,  
 EAUX ET FORÊTS  
 Le Ministre

ARRETE MINISTERIEL N° 056 / JAB/MIN/EN-ES/2006  
 DU 24 DEC 2006 PORTANT CREATION DU DOMAINE ET RESERVE  
 DE CHASSE DE SWA-KIBULA DANS LE TERRITOIRE DE KASONGO-  
 LUNDA, DISTRICT DU KWANGO.

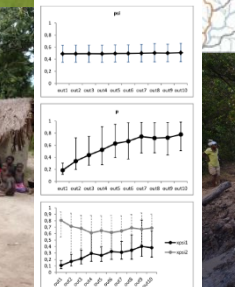
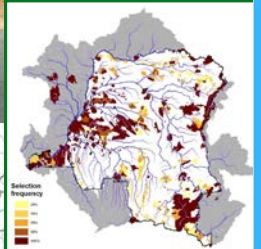


## PARAP Cartographie ex-situ des Aires Protégées



Arrêté n°656/AGR du 24 Décembre 1951

fixant les limites de la Réserve Totale  
 de chasse de SWA-KIBULA-CHUTES, EN TERRITOIRE  
 DE KASONGOLUNDA,--



Inventaire Faune PARAP  
 République Démocratique du Congo

Data Record

Data Analysis

Data Export

Modifications de la base

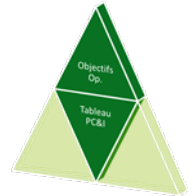




# STRATEGIC FORMULATION AND IMPLEMENTATION



- Inclusive process
- Dashboard of PCI
- **Operational objectives 2015-2020**
- **Monitoring tools and capacity**



# INNOVATIVE FACTORS

- Target conservation efforts in a rational manner
- Promote mainstreaming of PA system in national dialogues
- Reinforce governance and management effectiveness
- Facilitate establishment of sustainable funding mechanisms



# THANKS



PARAP

